

Creating a Composite
Sketch Using
FACES Software
Lab Activity Guide

36 W 4273

MATERIALS NEEDED BUT NOT PROVIDED

- FACES™ Composite Software version 4.0
- Computer(s) (preferably with printer)

OBJECTIVES

- Become familiar with interviewing techniques used by investigators
- Exercise observational and memory skills
- Utilize verbal skills to describe a suspect's physical appearance
- Utilize FACES software technology to render a representative facial composite

For Technical Assistance Call 1-800-962-2660

NATIONAL SCIENCE EDUCATION CONTENT STANDARDS

Standard A: Science as Inquiry	Abilities necessary to do scientific inquiry
	Understandings about scientific inquiry
Standard E: Science & Technology	Abilities of technological design
	Understandings about science and technology
Standard F: Science in Personal & Social Perspectives	Science and technology in local, national, and global challenges
Standard G: History & Nature of Science	Science as a human endeavor
	Nature of scientific knowledge

TIME REQUIREMENTS

The time it will take to complete this exercise will vary depending on the number of students participating and the number of computers available. Minimally, you should allow at least one 50 minute lab period to complete the activity.

BACKGROUND

Police Use of Suspect Composites

In many crimes, the suspect is someone who is known to the victim or witness. In crimes where the suspect is not known, the first step in an investigation will be to obtain a description from the witness to help identify the suspect.

A preliminary suspect description will normally be obtained and documented by the officer attending the scene of the crime. That description may be further developed in an interview or series of interviews with the witness conducted by the investigator assigned to the case.

The suspect may be identified by reviewing mugshots of persons who have previously been arrested, looking for someone who matches the suspect's description. If the witness cannot positively identify anyone in the mugshot book, and the police do not have another obvious suspect in mind, police may work with the witness to create a visual representation of the suspect. This representation is known as a composite and can be made either through a traditional forensic sketch artist or through the use of facial composite technology.

The composite can be used internally by the police agency to determine whether other investigators recognize the suspect as a prior offender or a person of interest (that is, a person questioned in connection with a crime but not arrested or charged). Depending on the nature and the circumstance of the crime, the police may also use the composite to enlist the public's help in identifying the suspect. The police may release the composite to local media together with a written description of the suspect and other information that can help encourage people to come forward to the police with possible leads.

Facial Composite Software

The FACES software that students will use during this lesson is an educational version of technology that is currently being used by thousands of police agencies around the world. FACES was designed to allow suspect composites to be developed by police investigators who, previously, had to rely on forensic sketch artists to do this work. Composites can therefore be developed more quickly and cost-effectively, and used to solve a larger number of cases.

Further, because FACES generates photo-like composites they can be used to carry out an electronic search for suspects. A growing number of police agencies are converting their mugshot photos to digital files, and creating mugshot databases. Using facial-recognition technology, FACES composites can be used as a query to search the database and retrieve possible matches. The matching mugshots can then be viewed by witnesses to determine whether a positive identification can be made.



DID YOU KNOW?

Forensic art is any art that aids in the apprehension or conviction of a criminal offender, or aids in the identification of unknown deceased persons.

The police version of FACES also generates a unique biometric alphanumeric code (BAC) for each composite that, when entered into the software, recreates the image, exact in every detail. The code, rather than the actual composite, can be transmitted between police agencies, giving them greater security when sharing composites for sensitive investigations. This code function is not available on the educational version. The code will look like this:

3SN9sb1oxFdvPYwWZcHEUjmBmu+SFo8WQF8heqVVamq6X4oat+coasD

Composite Interview Process

One of the goals of this lesson is for students to have the opportunity to go through a process similar to the one investigators use to interview a witness, obtain a physical description of the suspect, and develop a composite.

A witness's ability to recall and describe a suspect's appearance can be enhanced through interview techniques. It is important for the witness to be relaxed and for the interview to be conducted without interruption or distraction. Some interview suggestions are outlined in the lab procedures below.

Police will often also use a "cognitive" interview approach to improve memory recall. The cognitive approach takes the witness back to the day of the incident – or even the day before the incident – asking the witness to describe what was happening, what they were doing, bringing them gradually up to the time of the criminal incident. The interviewer may ask questions such as what the scene looked like, what it smelled like, and encourage the witness to relive the incident, and bring the suspect back to mind clearly and vividly. Then ask about general physical characteristics of the suspect and, finally, specific facial features.

A witness's memory and description of a suspect are evidence, just like fingerprints and DNA, and care needs to be taken to preserve that evidence. Interviewers need to avoid leading questions – that is, questions that suggest a "correct" answer. An example of a leading question would be "did he have any marks on his face that would suggest he had been in a fight?" When the witness is a child, the possibility of influencing the composite process is even greater. Even asking a question a second time may be a cue for a child that the interviewer was unhappy with his or her first response, or that they need to add more detail than they actually recall.

When using facial composite technology, most police will have the witness view the composite as it is being developed on the screen. When the witness feels the composite has a close resemblance to the suspect, the composite will be printed, with the original print treated as evidence for the case file. The officer who created the composite will typically sign the front of the original copy, with the time and date of the interview, the case number, and a signature from the witness on the back.



DID YOU KNOW?

Well over a hundred years ago, law enforcement agencies began using composite drawings to aid in an investigation where evidence was scant and the perpetrator unknown.



DID YOU KNOW?

In the 1880s, Alphonse Bertillon, sometimes called the father of scientific detection, developed an identification system referred to as “Portrait Parle” or “speaking likeness”. This system was a compilation of facial features taken from photographs with descriptive detail provided. Bertillon’s classification provided a basis for modern recall systems that would aid the artist in producing sketches as well as the development of composite kits, catalogs, and computer systems.

Simulating the Interview Process

Before students begin the activity, be sure to tell them how their simulated interview differs from an interview conducted by police officers.

During an actual interview, the witnesses would be recalling details after seeing a suspect, not after looking at a photograph. Also, a witness interview to develop a composite may take up to two hours.

For the purpose of this activity, students will not be expected to conduct cognitive interviews. Their goal will be to ask straightforward questions about the physical characteristics of the suspect’s face so that an accurate composite can be made, however, they will find it easier to ask the witness general questions about the witnesses appearance before zeroing in on specific features.

After participating in this lesson, students will have a better understanding of how police officers collect information from witnesses and use that information to develop a facial composite. They also will have a greater understanding of the complexity of remembering details about an individual seen only briefly, communicating that information to another person, and then translating that information into a composite that could be used as a way for someone else to recognize and identify a suspect.

PRE-LAB PREPARATION

MATERIALS NEEDED

FACES Software Program
Computer

Creating a Facial Composite

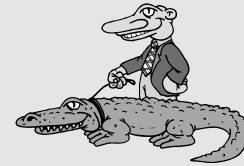


IMPORTANT: Read the FACES Software License Agreement, located at the end of this document, **BEFORE** installing this program.

1. Determine which type of license agreement was purchased for your FACES software (single, lab pack of five, or network/building site license).
2. Install the FACES software on each computer/server that will be used for the lesson. (see installation instructions at end of this booklet).
3. Select one of the individuals pictured in the five photographs provided or select any individual you wish to represent the “guilty suspect”.
4. Prior to performing this module, for each group performing this activity, create the appropriate number of photocopies of the “guilty suspect” image, the FACES Reference Guide, and the FACES Observation Game.



Once the FACES Software Program has been installed, it will be helpful (and fun) to become familiar with the program.



DID YOU KNOW?

In Michigan, it is illegal to chain an alligator to a fire hydrant.

PROCEDURE

MATERIALS NEEDED PER LAB GROUP

- Computer(s) with FACES software installed (one computer for every 2 students involved in the activity)
- A photocopy of the FACES reference guide included in this booklet for each computer
- A photocopy of each of the suspect photos in this guide (for Witness only)
- A photocopy of each of the suspect composites (optional)
- Paper and pencils



DID YOU KNOW?

The FACES software program is used successfully by U.S. police agencies in criminal investigations.

SCENARIO

A crime has been committed and detectives have asked for your help in creating a facial composite of the perpetrator. Good Luck!



The witness interview is the main part of this lesson. Allow about 20 minutes for this part of the lesson.

Part A: Setting up the Investigation

1. Organize into teams of two for computer loaded with FACES software. Select one person to be the FACES operator and one person to be the “witness”.



If there are more teams than computers, and if class time permits, the teams can take turns going through the 20 minute composite exercise.

2. Take a few minutes to “play” with the FACES software. Make sure that each team has a turn. Although the software is simple to use, you may want to review the FACES reference guide to make sure you understand its operation.
3. Once you are comfortable with the software, let the instructor know that the witness is ready to view a suspect photograph and/or describe the suspect . (DO NOT allow the operator to see the photograph).

Part B: Describing the Suspect (Witness Only)

1. Your instructor will either show you a photograph of a suspect or have you observe an individual.
2. Take a few minutes to study the face and pay close attention to the following features:
 - The overall shape of the face
 - The shape of the jaw
 - The shape of the eyes
 - The shape of the nose
 - The shape of the mouth
 - The presence of facial hair
 - The presence of facial piercing
 - The presence of facial markings, such as scars or tattoos
 - The length, color, and texture of the hair
 - The width of the neck
 - The protrusion of the ears
 - Forehead lines
 - Facial lines
3. After you have examined the face, return to the computer to begin the interview process.

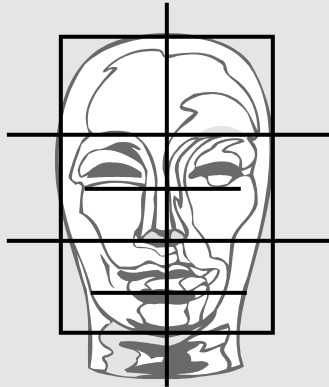
Part C: Conducting the Witness Interviews and Developing the Composites (Computer User Only)

1. Try to make the witness comfortable and relaxed during the interview to help in his/her memory recall. It is important that you communicate the following to the witness:
 - Relax and take your time.
 - We will work together to build the face.
 - Remember that the composite is only one part of the detective work; there are many other aspects to the case.
2. Begin the interview process by asking the witness some general questions about the suspect's appearance. For example, was the suspect male or female?, Was the person particularly thin or overweight?, What was the approximate age of the individual? Etc. Record all your questions and the answers in a notebook.



DID YOU KNOW?

Hair generally grows at a rate of approximately $\frac{1}{2}$ inch per month.



DID YOU KNOW?

Traditional rules of proportion shows the face divided into six equal squares, two by three. The upper horizontal division is roughly at the “third eye” level mid-forehead, the next division is at the base of the nose. The eyes sit on the upper horizontal center, and the mouth sits on the center of the lower third.

3. Next, open the FACES software and ask the witness to provide you with a detailed description of each facial characteristic featured on the program (if applicable). It’s usually best to begin with the overall shape of the face and add more details from there.
4. After you have completed the composite, save it, print it out (if possible), and show your instructor.
5. If time permits, switch computer operator and witness roles.



Alternatively, if you have more than five teams, let new teams take over the computers and go through the process, repeating the steps described in Parts B and C.

Part D – Comparing the Composites and Photographs

1. Conclude the exercise by comparing the original “suspect” with the composite(s) you created (and the sample composite included in this guide, if applicable).
2. How accurate was your composite?, How strong was your ability to recall details? If a second composite was created, did the second operator create a more accurate composite? Why might some composites be more accurate than others? Did the interviewing techniques have anything to do with it?



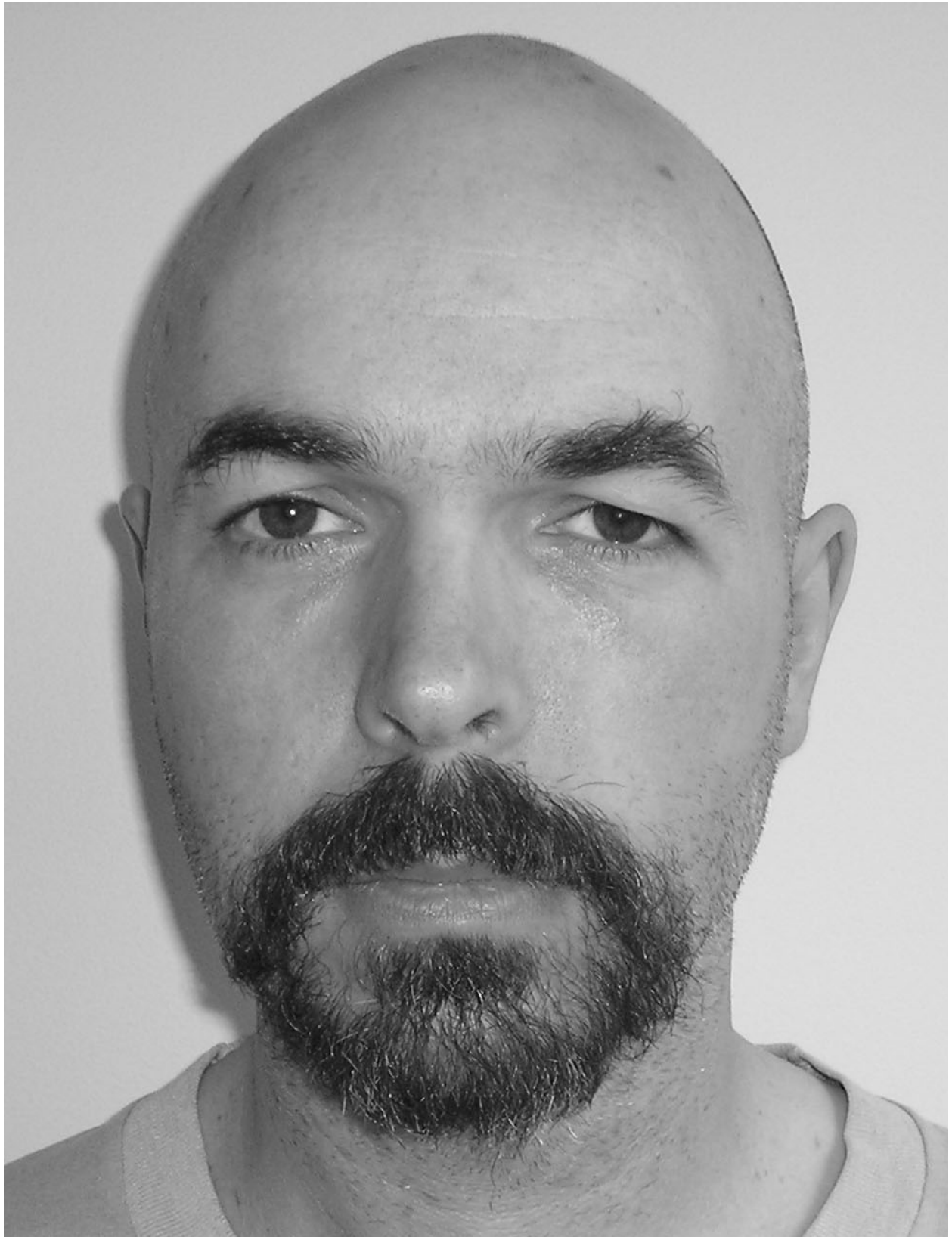
To help other students achieve a more accurate facial composite, create a list of suggested ways in which to improve this module and share it with your instructor.



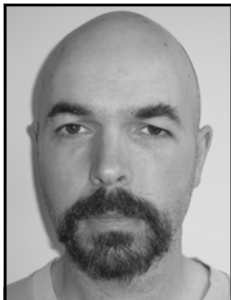








Sample Composite Sketches



FACES 4.0 EDU



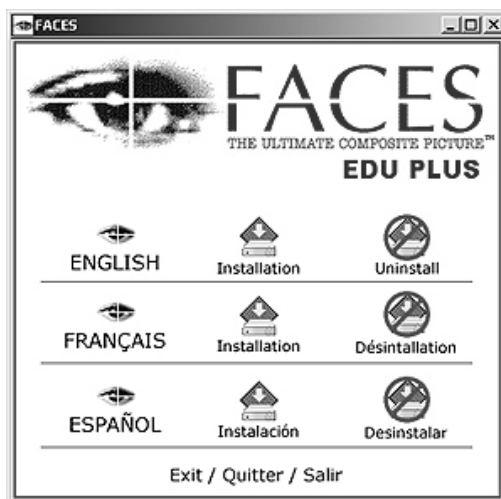
SOFTWARE INSTALLATION GUIDE

When you insert the FACES CD into your drive, a screen will automatically prompt you to either run FACES from the CD-drive or to install FACES.

To run from the CD-drive, simply click on the language version you want to run. If you prefer to install, simply click on the installation button beside the language version you want to run.

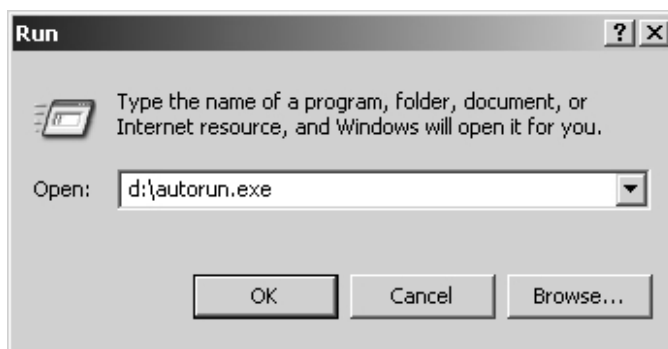
Note: you can change the language preference at any time while running FACES 4.0 EDU.

Figure 1 – Installation Screen



If for some reason you can't see the screen above after inserting the CD into the drive, Windows users should click the "Start" button on your desktop and select the "Run" option. Then, type d:\autorun.exe. Note that your drive letter (in this case d:) may be different. MAC users should click on the FACES EDU CD icon located in the desktop to locate the "Faces Application".

Figure 2 – Optional Installation Screen



FACES 4.0 EDU



REFERENCE GUIDE

To start a face, click on the icon for a facial feature category (#1) such as eye, nose, mouth, scar, tattoo, hat, etc. Use arrows at the bottom (#2) to scroll through all the options available for that category.

To change a face, click on any facial feature of the composite and then pick another option.

Use positioning tools (#3) to make features bigger or smaller, move them up and down, and choose between light, medium and dark hair. Not all positioning tools can be used for all features.

When you've finished your composite, use the save and print buttons (#4) on the left of the top menu bar.



Save & Print Buttons #4

FACES 4.0 EDU



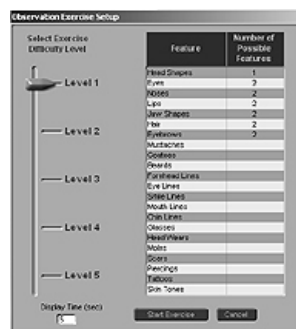
OBSERVATION GAME

The observation game can help build memory, recall and composite skills. You can play at different levels from 5 (most challenging) to 1 (recommended for beginners).

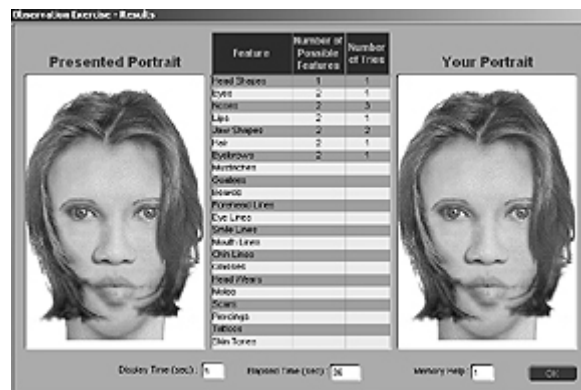
To start, click on the observation icon (Fig. #1) and choose a level (Fig. #2). A composite will appear briefly in the left hand area, then disappear. Try to recreate the composite by choosing from the elements in the right hand area. When you're done, click on the exercise icon again to compare your result (Fig. #3).



#1 Start Game



#2 Choose Game Level



#3 View Results

FACES Software License Agreement

IMPORTANT - READ CAREFULLY: YOU (“LICENSEE”) SHOULD CAREFULLY READ THE FOLLOWING TERMS AND CONDITIONS BEFORE USING THIS PACKAGE. BY SELECTING “AGREE”, YOU AGREE TO BE BOUND BY THE TERMS OF THIS SOFTWARE LICENSE AGREEMENT (“AGREEMENT”). IF YOU DO NOT AGREE WITH THE TERMS OF THIS AGREEMENT, SELECT “DECLINE”.

The delivered FACES™ software and related documentation, including any enhancements, corrections, revisions, updates, upgrades or modifications provided by Licensor (the “Program”) is licensed, not sold to you, by IQ Biometrix, Inc. (“Licensor”) for use only in accordance with the terms of this Agreement. Licensor reserves any rights not expressly granted to you.

1.0 Grant of License. In consideration of the payment of the applicable license fees, Licensor hereby grants to Licensee a non-exclusive, non-transferable license to use the Program, but not to make or sell the Program in any form except to resell the single computer system with which the Program is furnished, in object code form only, solely for its own internal business purposes. No right is granted for the use of the Program by any party other than Licensee. Licensee may copy the Program for legitimate and necessary archival or backup purposes or for program error verification by Licensee, provided that Licensee reproduces all copyright and other proprietary notices that are on the original copy of the Program and agrees to be bound by this Software License Agreement each time the Program is copied for such purposes described herein.

2.0 Networked Use. The Program is licensed for use on up to 5 computer systems, which is sold together with the enclosed software. Licensee may not use the Program or any portion thereof on any other computer or across a computer network.

ALTERNATIVE FOR NETWORK PURCHASES:

2.0 Networked Use. The Program is licensed for use on only that number of computer systems specified in your purchase agreement. You may not install or copy this software onto any more file servers or workstations than specified in your purchase agreement.

2.1 Other Restrictions on Use. In addition to the other restrictions contained in this Agreement, Licensee may not: (a) make any copies of the Program except as provided above; (b) transfer, sublicense, lease or distribute the original or any copies of the Program, or (c) alter, modify or translate the Program.

3.0 Ownership. Licensee understands that title to and all rights of ownership in the Program shall at all times remain with Licensor. Pursuant to this Agreement, Licensee does not acquire any claim or right of ownership to the Program or to any related patents, copyrights, trademarks or other intellectual property. Licensee shall indemnify, defend and hold Licensor harmless against any loss or threatened loss of right incurred by Licensor as a result of any act or omission of Licensee which has or may compromise Licensor’s right, title and interest in and to such Program.

4.0 Confidential Information. The Program, in any form, as well as the ideas, images (other than images of the full facial composites resulting from the use of the Software) and concepts incorporated in the Program (the “Confidential Information”) are confidential to, and a trade secret of, Licensor. Licensee shall hold the Confidential Information in confidence and shall not: (a) reverse engineer, reverse assemble, reverse compile or otherwise engage in similar manipulation of the Program, (b) distribute or post any Confidential Information on an electronic bulletin board system or any other remote access medium, or (c) publish or disclose any Confidential Information to any third party without Licensor’s written permission. Licensee shall grant access to the Confidential Information only to its employees and independent contractors who are required to have access to the Confidential Information for purposes specifically related to Licensee’s permitted use of the Program pursuant to this Agreement. Licensee shall inform all such individuals of the confidential nature of the Confidential Information and the restrictions on its publication, disclosure and use.

5.0 Warranties. **THE PROGRAM IS LICENSED AS IS. LICENSOR SPECIFICALLY DISCLAIMS ALL OTHER WARRANTIES, WRITTEN OR ORAL, STATUTORY, EXPRESSED OR IMPLIED, INCLUDING WITHOUT LIMITATION, WARRANTIES OF DESIGN, ANY IMPLIED WARRANTIES OF MERCHANTABILITY OR FITNESS FOR A PARTICULAR PURPOSE OR WARRANTIES ARISING FROM A COURSE OF DEALING. NO REPRESENTATION OR OTHER AFFIRMATION OF FACT, ORAL OR WRITTEN, INCLUDING BUT NOT LIMITED TO STATEMENTS REGARDING CAPACITY, SUITABILITY FOR USE OR PERFORMANCE OF LICENSED PRODUCTS OR UPDATES, WHETHER MADE BY LICENSOR’S EMPLOYEES OR OTHERWISE, WHICH IS NOT CONTAINED IN THIS AGREEMENT, SHALL BE DEEMED TO BE A WARRANTY BY LICENSOR FOR ANY PURPOSE OR GIVE RISE TO ANY LIABILITY OF LICENSOR WHATSOEVER.**

6.0 Limitation of Liability. IN NO EVENT SHALL LICENSOR BE LIABLE FOR ANY LOST PROFITS, INCIDENTAL, SPECIAL, INDIRECT OR CONSEQUENTIAL DAMAGES IN CONNECTION WITH OR ARISING OUT OF THIS AGREEMENT OR USE OF THE PROGRAM. IN NO EVENT SHALL LICENSOR BE LIABLE TO LICENSEE, REGARDLESS OF THE CAUSE OR FORM OF ACTION, FOR ANY AMOUNT IN EXCESS OF THE LICENSE FEES PAID FOR THE SPECIFIC PROGRAM CAUSING SUCH LIABILITY.

7.0 Maintenance and Training. Licensor shall have no obligations with respect to the maintenance and support of the Program unless Licensee has entered into a separate maintenance agreement and paid the applicable maintenance fees. Training and end-user support is provided under separate agreement by Licensor.

8.0 Payment. License fee(s) under this Agreement are due and payable in accordance with Licensor's Terms and Conditions, attached to Licensor's quotation to Customer, and in the amount stated therein.

9.0 Terms and Termination. This Agreement is effective until terminated. Licensor may terminate this Agreement immediately, without notice, if Licensee fails to comply with any term or condition of this Agreement. Upon termination, Licensee shall promptly return or destroy all copies of the Program.

10.0 Export Restrictions. The Program is subject to restrictions and controls imposed by the laws and regulations of the United States Export Administration Act (the "Act"). Licensee agrees and certifies that neither the Program nor any direct product thereof is being or will be acquired, shipped, transferred, exported or re-exported, directly or indirectly, in violation of the Act or will be used for any purpose prohibited by the Act.

11.0 U.S. Government Restricted Rights Legend. The Program is a "commercial item," as that term is defined at 48 C.F.R. 2.101 (Oct. 1995), consisting of "commercial computer software" and "commercial computer software documentation," as such terms are used in 48 C.F.R. 12.212 (Sept. 1995). Consistent with 48 C.F.R. 12.212 (Sept. 1995) and 48 C.F.R. 227.7202-1 through 227.7202-4 (June 1995), all U.S. Government End Users acquire the Program with only those rights set forth therein.

12.0 Governing Law and Limitations on Actions. This Agreement shall be governed by the laws of the State of California, without reference to its conflict of laws principles. All disputes arising out of this Agreement shall be subject to the exclusive jurisdiction and venue of the California state courts of Fresno County, California (or, if there is exclusive federal jurisdiction, the United States District Court for the Northern District of California), and the parties consent to the personal and exclusive jurisdiction of these courts. In the event that any action or proceeding is commenced to resolve any dispute arising out of or in any way related to this Agreement, the prevailing party shall be entitled to recover, in addition to any other relief awarded, all costs and reasonable attorneys' fees and expenses incurred in such action or proceeding. No action, regardless of form, arising out of this Agreement may be brought by Licensee more than two (2) years after such cause of action accrues.

13.0 Miscellaneous. This Agreement and all rights hereunder are not assignable by the Licensee without the prior written consent of the Licensor, which consent shall not be unreasonably withheld. Notwithstanding the foregoing, this Agreement and all rights hereunder are assignable by the Licensee in connection with any acquisition of the Licensee by means of a merger, consolidation, stock sale, asset sale or otherwise, or to a purchaser of the complete computer system with which this software is provided, provided such third party agrees to be bound by the terms and conditions of this Agreement. If any provision of this Agreement is held to be unenforceable, that provision will be enforceable to the maximum extent permissible and the remainder of this Agreement shall remain in full force. Neither party shall be deemed to be in default of this Agreement upon the occurrence of any event beyond the control of a party hereto which interferes with the performance of this Agreement by that party. Each party agrees to notify the other party upon the occurrence of such an event within five (5) days of such occurrence. This Agreement constitutes the complete and exclusive statement of the agreement between Licensee and Licensor with respect to the Program, and supersedes all prior and contemporaneous understandings and agreements relating to its subject matter. This Agreement may only be amended or modified in a written instrument signed by a duly authorized representative of both parties.

